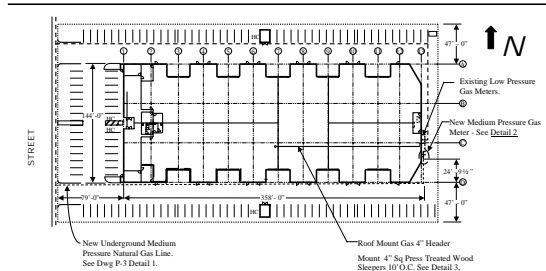
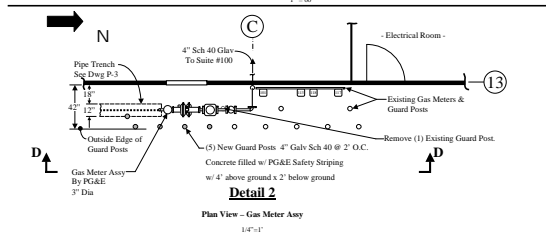


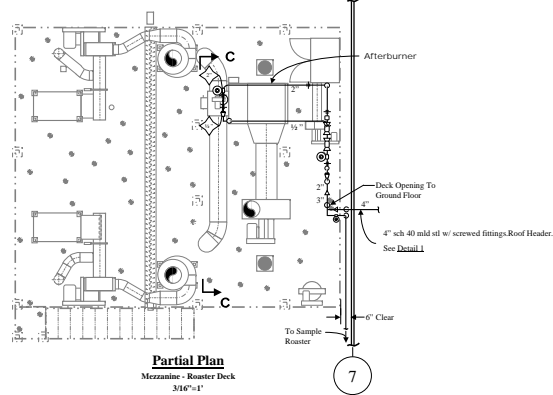
Partial Plan
Ground Floor
316'-x-1'



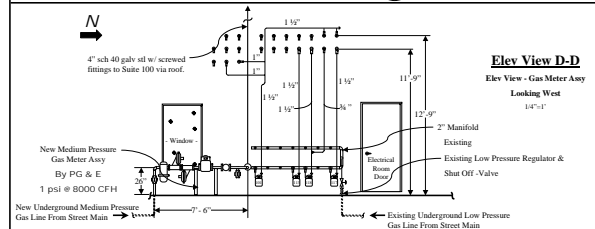
Detail 1
Site Plan
New Med Press Gas Meter Location Plan
1'-x-6'



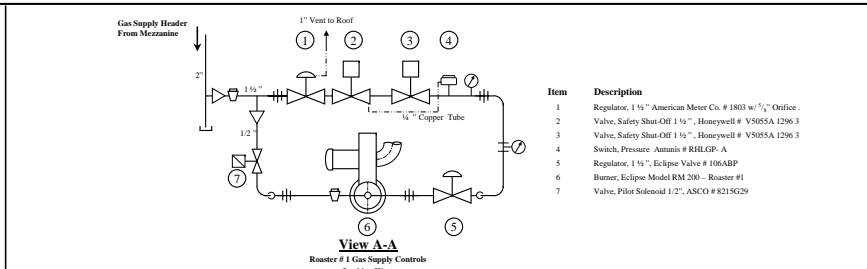
Detail 2
Plan View - Gas Meter Assy
1'-x-1'



Partial Plan
Mezzanine - Roaster Deck
M16'-x-1'

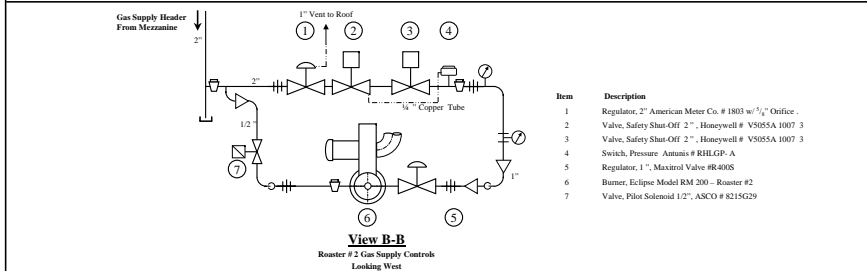


Elev View D-D
Elev View - Gas Meter Assy
Looking West
1'-x-1'



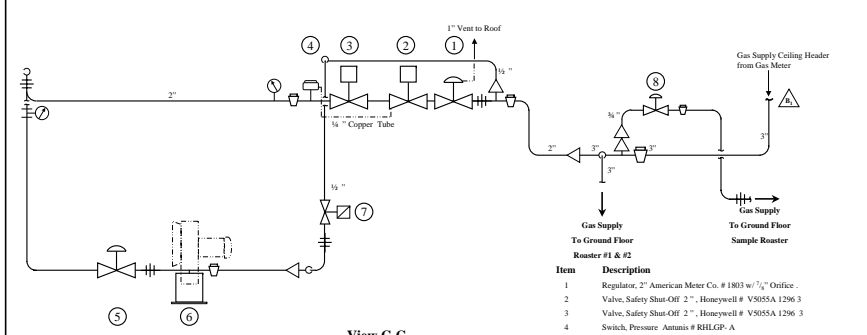
View A-A
Roaster #1 Gas Supply Controls
Looking West

Item	Description
1	Regulator, 2" American Meter Co. # 1803 w/ 1/2" Orifice.
2	Valve, Safety Shut-Off 2", Honeywell # V9055A 1296.3
3	Valve, Safety Shut-Off 1 1/2", Honeywell # V9055A 1296.3
4	Switch, Pressure Atomis # RHLGP-A
5	Regulator, 1 1/2", Eclipse Valve # 106ABP
6	Burner, Eclipse Model RM 200 - Roaster #1
7	Valve, Pilot Solenoid 1/2", ASCO # 8215G29



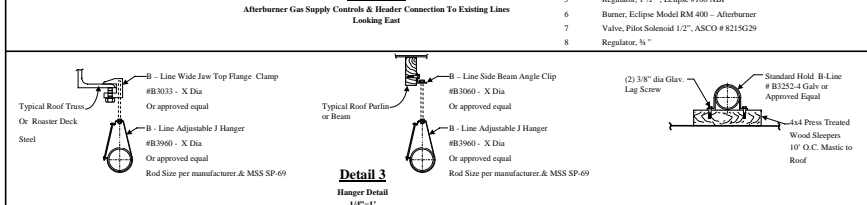
View B-B
Roaster #2 Gas Supply Controls
Looking West

Item	Description
1	Regulator, 2" American Meter Co. # 1803 w/ 1/2" Orifice.
2	Valve, Safety Shut-Off 2", Honeywell # V9055A 1007.3
3	Valve, Safety Shut-Off 2", Honeywell # V9055A 1007.3
4	Switch, Pressure Atomis # RHLGP-A
5	Regulator, 1", Maxitrol Valve #R-4005
6	Burner, Eclipse Model RM 200 - Roaster #2
7	Valve, Pilot Solenoid 1/2", ASCO # 8215G29



View C-C
Afterburner Gas Supply Controls & Header Connection To Existing Lines
Looking East

Item	Description
1	Regulator, 2" American Meter Co. # 1803 w/ 1/2" Orifice.
2	Valve, Safety Shut-Off 2", Honeywell # V9055A 1296.3
3	Valve, Safety Shut-Off 2", Honeywell # V9055A 1296.3
4	Switch, Pressure Atomis # RHLGP-A
5	Regulator, 1 1/2", Eclipse #106 ABP
6	Burner, Eclipse Model RM 400 - Afterburner
7	Valve, Pilot Solenoid 1/2", ASCO # 8215G29
8	Regulator, 1/2"



Detail 3
Hanger Detail
1'-x-1'

NOTES:

- All piping is to be Schedule 40 mild steel screwed fittings. Galvanized Out Door. Mild Steel Indoor
- Min Piping Supports: 10' on center for 3", 8' on center for 1 1/2", 6' on center for 1/2" per 1997 UPC Table 12-2.
- All gas piping is to be properly leak tested using soap bubbles per 1997 UPC Section 1214 prior to use.
- Burner System gas train is in accordance with NFPA 86 Rev 1995. All air handling devices are to be interlocked with gas supply for safe operation in accordance with NFPA 86 Rev 1995.
- Gas Supply: PG & E 1 psi @ 8000 cfh.
- Gas Pressures: Roaster 1 & Roaster 2 - Eclipse #RM200 - 54 to 1.99 psi @ 2.0 x 10⁶ Btu/hr nat gas
Afterburner - Eclipse #RM400 - 72 to 1.99 psi @ 4.0 x 10⁶ Btu/hr nat gas
- Vent Lines shall be in accordance 1997 UPC Section 1218.4 and per manufacturer's sizes.
- All trenching work to be in accordance with UPC 1997 Section 609, Section 720 and PG&E Standards.
- Pressure test per 1997 UPC 1204.3.2

Symbol Legend	
	Equipment Connection Size Union
	Pipe Elbow End View
	Pipe Cap
	Concentric Reducer
	Gas Cock
	Pressure Gauge
	Pressure Switch
	Solenoid Valve
	Regulator
	Masterized Safety Blocking Valve

GAS SYSTEM PIPING

SAMPLE
Piping Plan
San Jose, CA

Ref DWG # E-1158 P-3 Gas Piping Isometric

Scale: 3/8"=1' by: M McCarron
REV: A Date: 2/4/02 E - PIPING